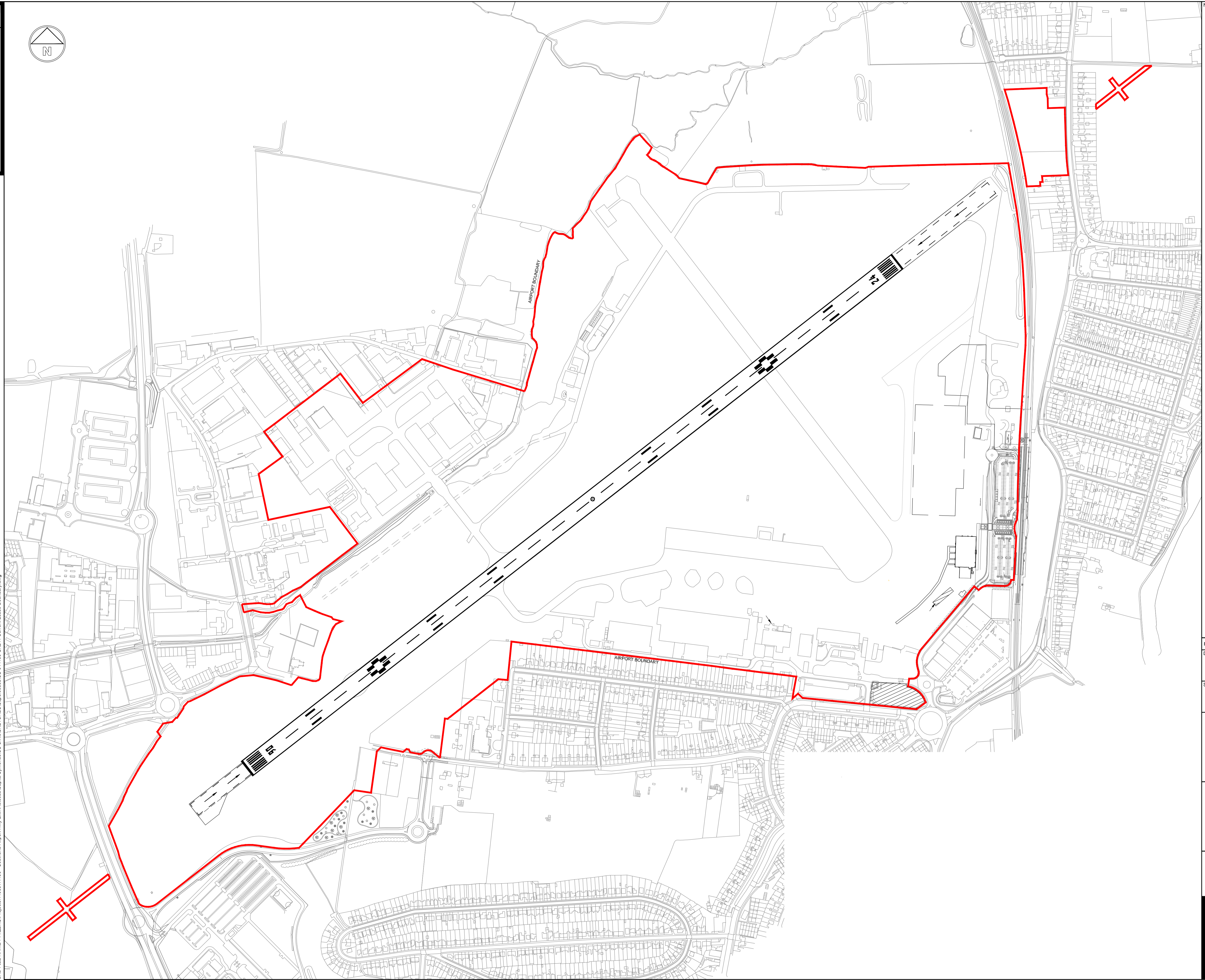


10mm 0 10mm

CAD FILE NAME: F:\ZBRSP\Projects\400404190 - Southern Airport Rwy Extn\Aviocad\Capita Symonds\CS\044190-SK241 Current Lease Boundary.dwg



NOTES

— AIRPORT LEASE BOUNDARY

This product includes mapping data licenced from Ordnance Survey with permission of the Controller of Her Majesty's Stationery Office. Crown copyright and/or database right 2010. All rights reserved. Licence number 1000487304

C	BOUNDARY UPDATED	RA	DS	DS	20.01.12
B	BOUNDARY AMENDED	BS	RA	DS	23.08.10
A	BOUNDARY AMENDED	RA	DS	DS	13.08.10

REV	DR	CH	PA	DATE
	bgs	RA	DS	09.08.10

SCALES @ A1 SIZE	ISSUE STATUS
N.T.S.	INFORMATION

**LONDON SOUTHEND
AIRPORT
RUNWAY EXTENSION**

**CURRENT AIRPORT
LEASE BOUNDARY**

Stobart Air

CAPITA SYMONDS
Quays Office Park, Conference Avenue,
Portishead, BRISTOL BS20 7LZ
Tel: +44 (0)1275 840840 Fax: +44 (0)1275 840830

NOTE THE PROPERTY OF THIS DRAWING AND DESIGN IS VESTED IN CAPITA SYMONDS LIMITED AND MUST NOT BE COPIED OR REPRODUCED IN ANY WAY WITHOUT THEIR WRITTEN CONSENT